

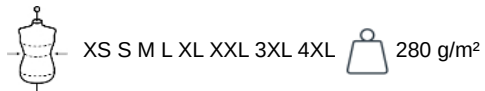
KARIBAN

K7021

Unisex-Fleece-Hose

- Weiche Innenseite aus ungebürstetem 2-Faden-Molton.
- Entspannter, gerader Schnitt.
- Konfektion aus 80% Baumwolle und 20% Polyester.

80 % Baumwolle / 20 % Polyester. Gebürstetes Molton mit 2 Fäden. Gerader Schnitt. 2 Seitentaschen. Elastikbund mit flachem Kordelzug. Strickbündchen an den Beinabschlüssen.



Zertifikate

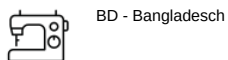


Zusätzliche Informationen

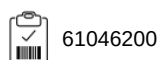
Logistik



Herkunftsland



Zolltarifnummer



Auch erhältlich als



K7022

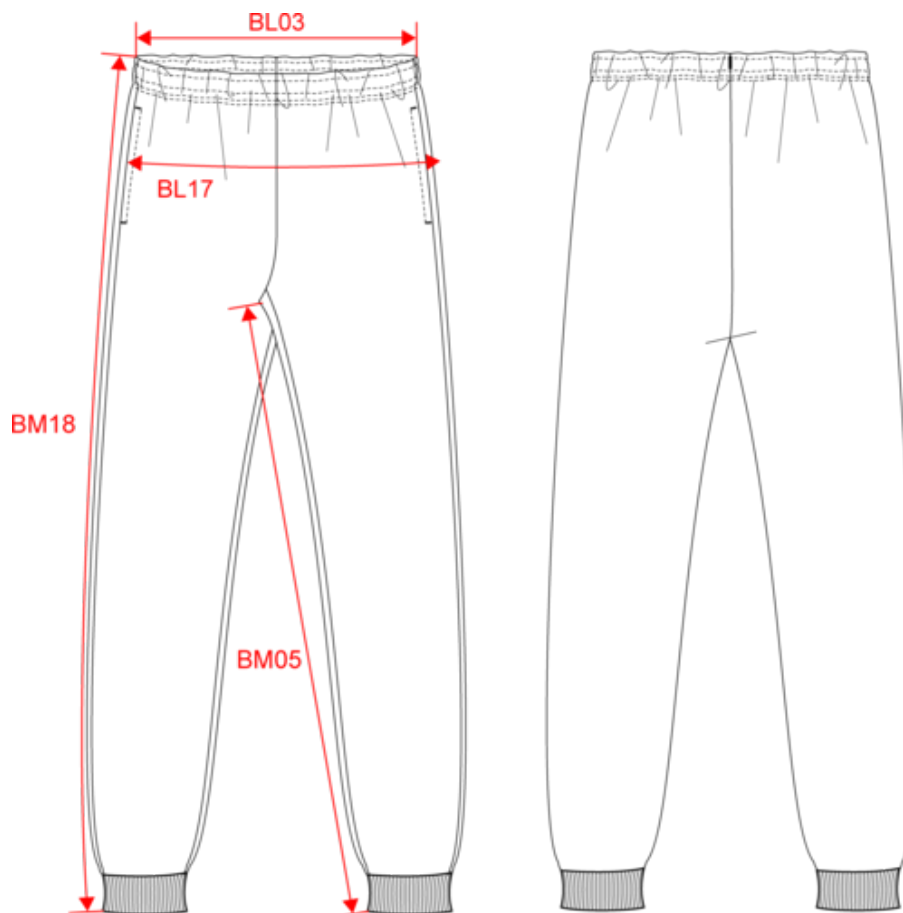


KARIBAN

K7021

Unisex-Fleece-Hose

Maße



Measurements in cm	XS	S	M	L	XL	XXL	3XL	4XL
BL03 - 1/2 elasticated waist width relaxed (front over back)	34.00	36.00	38.00	40.00	43.00	46.00	49.00	52.00
BL17 - 1/2 hip width (measured parallel to waistband)	44.00	47.00	50.00	53.00	56.00	59.00	62.00	65.00
BM05 - Inseam length	78.00	78.00	78.00	78.00	78.00	78.00	78.00	78.00
BM18 - Side length (waistband included)	102.25	103.00	103.75	104.50	105.25	106.00	106.75	107.50

KARIBAN

K7021

Unisex-Fleece-Hose

Farbinformationen



Black

RVB : 35,35,37
Pantone C : Black
Pantone TCX : 19-4004TCX



Dark Grey

RVB : 63,60,60
Pantone C : 447C
Pantone TCX : 19-0000TCX



Navy

RVB : 41,46,56
Pantone C : 433C
Pantone TCX : 19-4012TCX



Oxford Grey

RVB :
Pantone C : Based on Cool gray 7C
Pantone TCX : Based on 16-3850TCX

Logistik



1



20

Sizes	Width (cm)	Height (cm)	Length (cm)	Net weight (kg)	Gross weight (kg)	Pieces/Box	Pieces/Bundle
XS	40.00	22.00	60.00	7.6	9	20	1
S	40.00	22.00	60.00	7.9	9.3	20	1
M	40.00	22.00	60.00	8.4	9.8	20	1
L	40.00	24.00	60.00	8.8	10.2	20	1
XL	40.00	24.00	60.00	9.3	10.7	20	1
XXL	40.00	28.00	60.00	10.1	11.6	20	1
3XL	40.00	28.00	60.00	10.4	11.9	20	1
4XL	40.00	28.00	60.00	10.7	12.2	20	1