



R911M
core
VALUE

**RECYCLED 3-LAYER PRINTABLE
HOODED SOFTSHELL**

A great fitting, durable and smart looking hooded softshell for men in a sturdy and smart recycled fabric at CORE value price point

Origin: Bangladesh

Commodity Code: 6203339000

Fabric: 290g/m² 3 layer mechanical yarn comprising:
Outer-Layer: 100% recycled polyester
Mid-layer: Waterproof 8000mm, Breathable 3000mvp, Windproof 100% recycled TPU membrane
Inner-layer: 100% recycled polyester microfleece

Tech:
Enhanced Water Repellency, Breathable 3000mvp, Windproof

M:23 (equivalent 1L plastic bottles)

Features:



- **YKK NATULON® Eco-friendly front and pocket zips**
- Zip through collar with chin guard and zip pull
- Microfleece-lined for extra warmth
- Elasticised bound cuff
- Decorative top stitch
- Adjustable hood
- Inside pockets
- Hang loop
- Budget CORE value range
- **Recycled fabric using environmental-friendly materials made from recycled plastic bottles and post-industrial waste offering a recycled equivalent to conventional yarns**
- **End of life recyclable**



USP:



To fit sizes M
UK
EU

S	M	L	XL	2XL	3XL*	4XL*
38	41	44	47	50	53	56
44	48	50	54	56	60	64

Colours: NAVY (289)
BLACK (BLK)

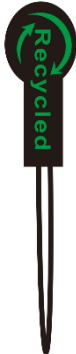
CARE:

Decoration Access: open
Decoration Type: Embroidery, direct print, transfer (not suitable for DTG), DTF
NOTE: please TEST to ensure your inks and devices are suitable for printing on this fabric

Carton Qty: 10 / 5*

Pack Qty: 5

SKU : 14



recycled
by *Result*



core
VALUE

R911M
RECYCLED 3-LAYER PRINTABLE HOODED SOFTSHELL

ORIGINAL

SOFT SHELL
PIONEERS
SINCE 2005

Date: 10.10.2023

R911M - RECYCLED 3-LAYER PRINTABLE MENS HOODED SOFTSHELL



Measures in Cms

TO FIT APPROX CHEST SIZE	SIZE	S	M	L	XL	2XL	3XL	4XL	TOL +/-
	UK (INCHES)	38"	41"	44"	47"	50"	53"	56"	
	EURO (CMS)	44	48	50	54	56	60	64	
A	1/2 CHEST AT UNDERARM	53.0	57.0	61.0	65.0	69.0	73.0	77.0	1.0
B	CENTRE BACK LENGTH	70.0	72.0	74.0	76.0	78.0	80.0	82.0	1.0
C	SLEEVE LENGTH FROM SIDE NECK TO CUFF END	78.0	80.0	82.0	84.0	86.0	88.0	90.0	1.0

