



R910X
core
VALUE

**RECYCLED
HOODED PADDED PARKA**

A big, warm hug of a jacket. A lightweight and warm recycled padded parka with hood for extra shelter


Origin: Bangladesh

Commodity Code: 6201401011

Fabric:

Outer: 100% recycled nylon
Padding: 220g/m² 100% recycled polyester
Lining: 100% recycled polyester 26124

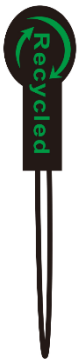
Tech:

Showerproof, Breathable, Windproof
 **22** (equivalent 1litre plastic bottles)

Features:



- Padded & bound elasticised hood
- Zip through collar with zip pull
- Contemporary quilted design
- Soft feel poly wadding
- Budget CORE value range
- Elasticated cuff
- Zipped pockets
- Inner storm flap
- Longer length
- Inside pocket
- Straight hem
- Hang loop
- **Recycled fabric using environmental-friendly materials made from recycled plastic bottles and post-industrial waste offering a sustainable equivalent to conventional yarns**
- **End of life recyclable**



USP:



To fit sizes

UK
EU

XS*	S	M	L	XL	2XL	3XL*
35	38	41	44	47	50	53
44	48	50	54	56	60	64

Colours:

ROYAL (280)
NAVY (289)
BLACK (BLK)

WASH INSTRUCTION:



Decoration Access: Inner back hem & left chest

Decoration Type: Embroidery

Carton Qty: 10 / 5*

Pack Qty: 5

SKU : 21

recycled
by *Result*



**R910X
RECYCLED
PADDED HOODED PARKA**

core
VALUE



Date: 13.06.2023

R910X - RECYCLED SUPER PADDED HOODED JACKET



Measures in Cms

TO FIT APPROX CHEST SIZE	SIZE	XS	S	M	L	XL	2XL	3XL	TOL +/-
	UK (INCHES)	35"	38"	41"	44"	47"	50"	53"	
	EURO (CMS)	44	48	50	54	56	60	64	
A	1/2 CHEST AT UNDERARM (SMOOTH OUT FLAT)	54.0	57.0	60.0	63.0	68.0	71.0	75.0	1.0
B	CENTRE BACK LENGTH	74.0	76.0	78.0	80.0	82.0	84.0	86.0	1.0
C	SLEEVE LENGTH FROM SHOULDER SEAM TO CUFF END	65.0	67.0	69.0	71.0	73.0	74.0	75.0	1.0

