



R456X

ALL BLACK SAFETY TRAINER

Airy, durable trainer in abrasion resistant upper material in unisex fit; ideal for warehouse wear

Origin: China

Commodity Code: 6403400000

Fabric:
Upper: Thermoplastic PU with water repellent leather trim
Sole: Double density PU/PU
Toe cap: Steel

Tech:
 CE EN ISO 20345:2022 SB SR FO
 Breathable

11624

Features:



- Padded tongue & collar
- Energy absorption heel
- Moulded PU scuff cap
- SRA slip resistance
- Spare insole set
- Steel toecap
- Oil resistant
- Heel loop



USP:



- Lightweight
- Low cut sports look
- Ventilating mesh & lining wicks away moisture
- Injection shoe moulds for this style are same for men and women; size range therefore starts with women's and runs through in to men's

Sizes

| | | | | | | | | | | | |
|----|----|----|----|----|----|----|----|----|----|----|----|
| UK | 3 | 4 | 5 | 6 | 6½ | 7 | 8 | 9 | 10 | 11 | 12 |
| EU | 36 | 37 | 38 | 39 | 40 | 41 | 42 | 43 | 44 | 45 | 46 |

Colour: BLACK (BLK)

Care Instructions: As per booklet

Carton Qty: 8

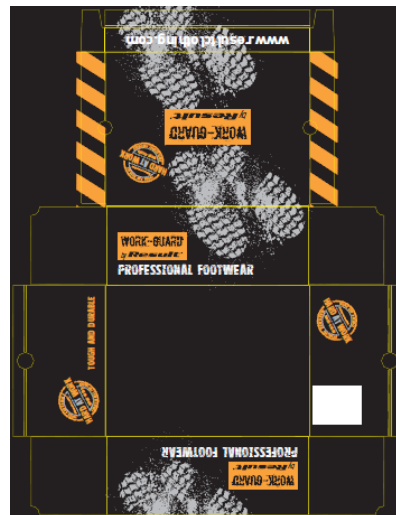
Pack Qty: 4

SKU: 11



WORK-GUARD
by **Result**®

R456X
ALL BLACK SAFETY TRAINER
CE EN ISO 20345:2022 SB SR FO



WORK-GUARD

by **Result**[®]

R456X - ALL BLACK SAFETY TRAINER INNER SOLE LENGTH/WIDTH



A = INSOLE LENGTH FROM INNER HEEL CURVE TO LONGEST POINT AT TOE
B = INSOLE WIDTH ACROSS WIDEST PART.

| SIZE | | | | | | | | | | | | |
|------------|------|------|------|------|------|------|------|------|------|------|------|-----|
| UK | 3 | 4 | 5 | 6 | 6.5 | 7 | 8 | 9 | 10 | 11 | 12 | TOL |
| EURO | 36 | 37 | 38 | 39 | 40 | 41 | 42 | 43 | 44 | 45 | 46 | +/- |
| (a) LENGTH | 22.8 | 23.2 | 24.0 | 25.0 | 25.5 | 26.8 | 27.0 | 27.5 | 28.0 | 29.0 | 29.4 | 1.0 |
| (b) WIDTH | 8.3 | 8.6 | 8.8 | 8.9 | 9.0 | 9.2 | 9.4 | 9.6 | 9.8 | 10.0 | 10.2 | 0.5 |